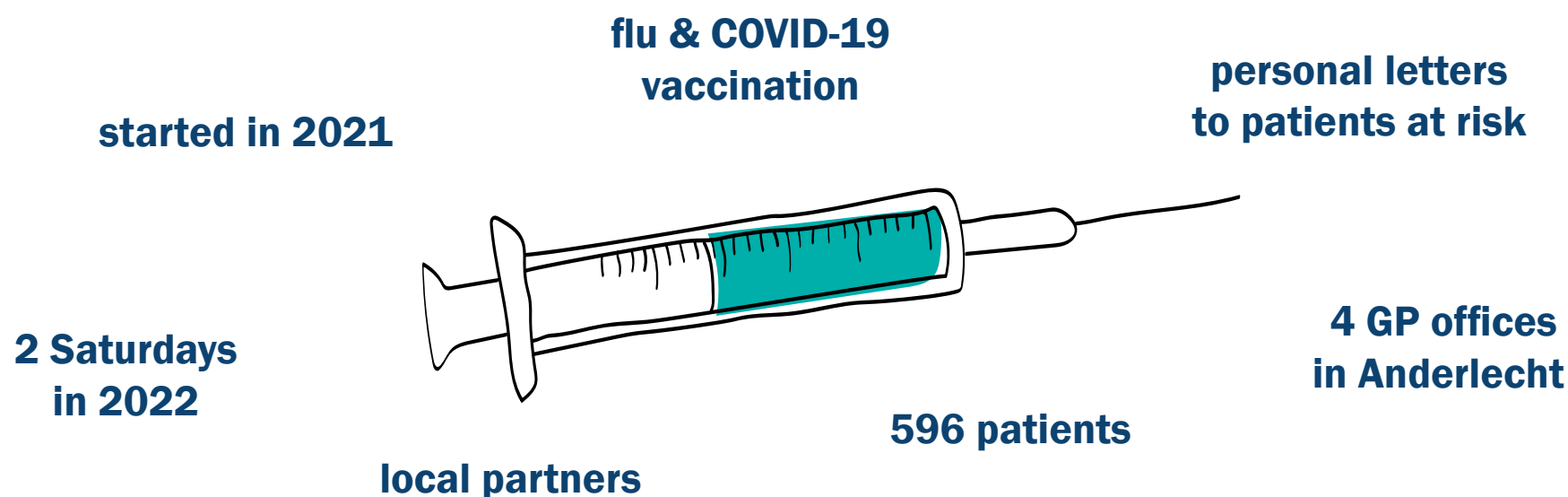


Implementing integrated care in Brussels through a pop-up vaccination

by BruZEL/Ester Willemyns, Dr. Annick Dermine, Dr. Ann Roex and Ann Herzeel



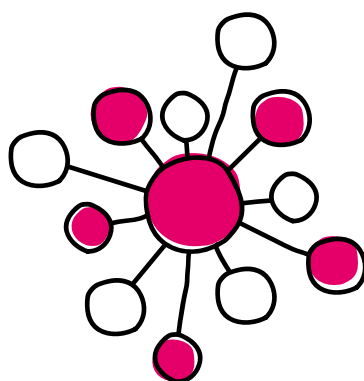
Many of Brussels' inhabitants showed hesitance towards vaccination in 2021. Citizens indicated to preferably receive their vaccine in their own neighbourhood, administered by a health care provider they already knew. They said it would make them feel more confident and give them the opportunity to ask remaining questions. Primary health care providers, however, indicated to have too little resources to vaccinate their patients within their normal practices.



- support local health care providers (reducing the workload)
- facilitate integrated care within Brussels (health care providers got to know each other better and had extra time for their patients)

Local partners were involved:

- GP's of 4 practices in Anderlecht
- local pharmacists
- local nurses
- the local community service



Pharmacy.brussels for up-to-date information on flu vaccination

Logo Brussels

students from the neighbourhood

BruZEL offered different types of support during the flu and COVID-19-autumnal vaccination campaign to Dutch speaking GP's in Brussels. One of these types of support was a local 'pop-up' vaccination centre.

Up to 4 parallel vaccination lines were put in place: local pharmacist delivered vaccines, students guided the patients, nurses administered the vaccines, a GP registered in the EPD and was stand by.

BruZEL coordinated, contacted and employed all care providers, provided the necessary tools (reservation/registration) and all the material needed.

The local authorities provided the facility, the vaccination boxes and facilitated parking places close to the entrance.



Future? We see an opportunity to broaden the scope of preventive actions: towards e.g. health educational events.

